

# SEGA®

amusements international

# PRODUCT CATALOG 2020





1940 | THE BEGINNING



1952 | SERVICE GAMES



1966 | 1ST AMUSEMENT MACHINE



1970's | ARRIVAL OF VIDEO



1980's | HOME CONSOLE



SE

SE

# SEGA®

1960 | SEGA GAMES ESTABLISHED

# A BRIEF HISTORY OF SEGA

SEGA is one of the most active, creative and productive developers the industry has ever known. It has shaped generations and entered the lives of millions of people around the world and continues to do so to this day.



1991 | SONIC IS BORN

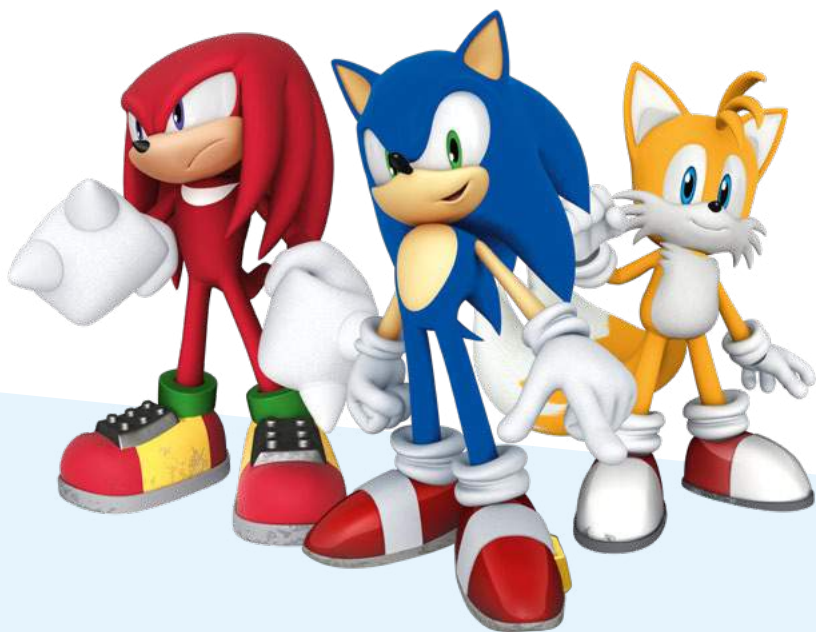


2008 | FORD RACING - FIRST EUROPEAN DEVELOPED PRODUCT

2004 | SEGA SAMMY

# SEGA Sammy





## BIENVENIDOS A **SEGA**<sup>®</sup> amusements international

En nombre de todo el equipo de SEGA AMUSEMENTS INTERNACIONAL, me complace presentarles el último catálogo anual que presenta una innovadora emocionante, clásica y dinámica gama de productos Exitosos de entretenimiento.

2020 nos verá celebrar 60 años desde que se crearon Juegos de Sega. Ahora, como antes, consideramos nuestro negocio como su negocio. Como tal, estamos dedicados a la investigación y el desarrollo, y a la asociación con los mejores proveedores de todo el mundo. Sega les brinda Los mejores productos disponibles para permitirle hacer crecer su negocio con éxito.

Nos enorgullecemos de construir relaciones con nuestros clientes. Esto para Sega es de suma importancia. Puede estar seguro de un nivel de atención en el que usted y su equipo pueden confiar.

Comprar a través de Sega es comprar con confianza.



# WELCOME TO

## SEGA<sup>®</sup> amusements international

On behalf of the entire SEGA AMUSEMENTS INTERNATIONAL team, I am excited to present to you the latest annual catalogue featuring an innovative, exciting, classic and dynamic range of proven amusement products.

2020 will see us celebrate 60 years since Sega Games was created – now as back then we view our business as your business and as such are dedicated through research and development, and having partnerships with the best suppliers across the globe, to bring you the greatest products available to allow you to successfully grow your business.

We pride ourselves on building relationships and the one with our customers is of the utmost importance. You can be assured of a level of care that you and your team can depend on.

Buying through Sega is buying with confidence.

A handwritten signature in black ink that reads "Paul Williams".



**PAUL WILLIAMS**  
CEO

# GAME SALES CONTACTS



**VINCE MORENO**  
US SALES MANAGER

📧 vince.moreno@sau.sega.com  
📞 (224) 265-4271



**CARLOS A. LAGUARDIA**  
SOUTH AMERICA SALES MANAGER

📧 carlos@sau.sega.com  
📞 (847) 899-5663  
📠 (786) 842-3439



**MARTY SMITH**  
US SALES MANAGER

📧 marty.smith@sau.sega.com  
📞 (662) 812-3082

Our US sales team has over 60 years combined coin-op experience. This gives them an exceptional level of market and product knowledge and allows them the unique ability to provide you with the solutions you need to successfully run your business. Give them a call – they're always happy to help!

# SUPPORT CONTACTS



**JERRY KORBECKI**  
DIRECTOR OF OPERATIONS

📧 jkorbecki@playitamusements.com  
📞 (224) 265-4263

Play It! Amusements, Inc. is North and South America's exclusive provider of parts and service for all SEGA coin-operated amusement games past, present and future. This includes all 3rd party games exclusively distributed by SEGA.



**ANGELA SPINELLE**  
CUSTOMER SERVICES REPRESENTATIVE

📧 aspinelle@playitamusements.com  
📞 (224) 875-7049



**DON CAMPBELL**  
SERVICE TECHNICIAN

📧 dcampbell@playitamusements.com  
📞 (224) 875-7045



**ALBERT ALBAZI**  
SERVICE TECHNICIAN

📧 aalbazi@playitamusements.com  
📞 (224) 875-7058

## TECHNICAL SUPPORT

📧 support@playitamusements.com  
📞 (224) 265-4283

# GAMES







# MISSION: IMPOSSIBLE ARCADE



ILLUSTRATION PURPOSES ONLY.  
PRODUCT MAY CHANGE.

## MISSION: IMPOSSIBLE ARCADE



1-4 PLAYERS



VIDEO GAME



ACTION



LANGUAGES

Agent, your mission if you choose to accept it, is to save the world by sabotaging enemy plans that aim to weaponize humanoid robots. You will have a range of weapons and high-tech gadgets at your disposal to complete your mission but remember time is not on your side. Sega brings the multi-billion dollar blockbuster film franchise MISSION: IMPOSSIBLE to the amusements market. MISSION: IMPOSSIBLE Arcade is an adrenaline-fueled video game, that is set to rock the amusements world in 2020.

WATCH



SCAN QR CODE TO VIEW PRODUCT VIDEO



- **BRAND-NEW DUAL PISTOL CONTROLLERS**
- **NEXT-GENERATION 4 PLAYER SPECIAL ATTRACTION CABINET**
- **9 ADRENALINE-FUELED STAGES**
- **SURROUND SOUND & SUBWOOFERS LETS PLAYERS EXPERIENCE ALL THE EXPLOSIVE ACTION**
- **TWO 55" FULL HD SCREENS AND 65" ATTRACT DISPLAY**

**DIMENSIONS:**  
**D** 2367mm | **W** 4000mm | **H** 2856mm  
**D** 93" | **W** 157" | **H** 112"

**9.5** M<sup>2</sup>  
**102** SQ. FT.

SCREEN  
SIZE  
**55"**

TM & © 2019 Paramount Pictures Industries, Inc. All Rights Reserved ©SEGA





# MARIO & SONIC AT THE OLYMPIC GAMES ARCADE EDITION



Published by





**NEW**

ILLUSTRATION PURPOSES ONLY.  
PRODUCT MAY CHANGE.



TM IOC/TOKYO2020/USOC 36USC220506. © 2019 International Olympic Committee ("IOC"). All rights reserved. SUPER MARIO characters © NINTENDO. Trademarks are property of their respective owners. SONIC THE HEDGEHOG characters © SEGA. SEGA, the SEGA logo and Sonic The Hedgehog are either registered trademarks or trademarks of SEGA Holdings Co., Ltd. or its affiliates.



## MARIO & SONIC AT THE OLYMPIC GAMES



1-4 PLAYERS



VIDEO GAME



SPORTS  
GAME



LANGUAGES

Mario & Sonic at the Olympic Games Tokyo 2020 Arcade Edition from Sega is the only official licenced Olympic arcade game in the world. Players can participate in twelve events, including GYMNASTICS, RUGBY, DISCUS THROW, TRIPLE JUMP, 100M, SPORT CLIMBING, SURFING & SWIMMING as well as four retro events.

- **8 FUN AND CHALLENGING EVENTS TO COMPETE IN**
- **4 BONUS RETRO EVENTS**
- **12 CHARACTERS TO CHOOSE FROM**
- **UPGRADE KIT AVAILABLE FOR YOUR RIO 2016 CABINETS**

**PLEASE CHECK**  
[www.segaarcade.com](http://www.segaarcade.com)  
**FOR THE LATEST INFORMATION**



# HOUSE OF THE DEAD

SCARLET DAWN



# HOUSE OF THE DEAD: SCARLET DAWN



1-2 PLAYERS



VIDEO GAME



ACTION



LANGUAGES

Having defined the genre way back in 1997, House Of The Dead returns to deliver an unparalleled horror action experience for all. Every aspect of the game is designed to deliver a unique, chilling experience. Using the latest technology, and bringing a variety of immersive features to work alongside the in-game action, this game delivers an epic experience of terror, unlike anything you have ever seen before!

**WATCH**



SCAN QR CODE TO VIEW PRODUCT VIDEO



- **INNOVATIVE SUPER DELUXE CABINET**
- **5 EPIC GAME MISSIONS**
- **IMMERSIVE 5-D EXPERIENCE - SURROUND SOUND, BASS SHAKER, AMBIENT LIGHTING, WIND EFFECTS & CUTTING EDGE GRAPHICS**
- **GAME CHANGING GUN CONTROLLER**

**DIMENSIONS:**  
D 2150mm | W 1450mm | H 2310mm  
D 84" | W 57" | H 90"

**3.1** M<sup>2</sup>  
**33.3** SQ.FT

**SCREEN SIZE**  
**55"**

© 2018 HASBRO. ALL RIGHTS RESERVED.  
© 2018 PARAMOUNT PICTURES CORPORATION. ALL RIGHTS RESERVED.  
© 2018 SEGA. ALL RIGHTS RESERVED. LICENSED BY HASBRO.



# TRANSFORMERS

## SHADOWS RISING

# TRANSFORMERS™ SHADOWS RISING

## TRANSFORMERS™ SHADOWS RISING



1-2 PLAYERS



VIDEO GAME



ACTION



LANGUAGES



WATCH



SCAN QR  
CODE TO  
VIEW PRODUCT  
VIDEO



TRANSFORMERS™ Shadows Rising, the long-awaited follow up to the smash hit licensed video game TRANSFORMERS™ Human Alliance, partners players with the three movie's stars, Optimus Prime, Bumblebee or Sideswipe. Players must battle their way across America, Europe, Asia and even Space to stop the evil Megatron's plans.

- **BRAND NEW HYPERENERGY TECH LEVER CONTROLLER**
- **OPTIMUS PRIME THEMED CABINET**
- **EASY TO JOIN, ACTION-PACKED, FAST PACED GAMEPLAY**
- **4 EXHILARATING STAGES TO PLAY**
- **ATTRACTIVE CHARACTER BILLBOARD AND DUAL SIDED MARQUEE**

### DIMENSIONS:

#### With Character Billboard

D 2120mm | W 1740mm | H 2920mm

D 84" | W 69" | H 115"

#### Without Character Billboard

H 2630mm | H 104"

3.6 M<sup>2</sup>  
38.7 SQ.FT

SCREEN  
SIZE  
55"







# ATV SLAM



1-4 PLAYERS



VIDEO GAME



RACING



LANGUAGES

**NEW**

**WATCH**



SCAN  
TO VIEW  
VIDEO



ATV Slam takes All-Terrain Vehicle (ATV) racing to a whole new level. The custom developed motion platform lets players experience all the bumps just like being on the track. Exotic environments, wind effects, razor sharp console quality graphics delivered by 'Unreal Engine 4' and unique AI system gets players hearts racing through the game.

- **NEW AIR CYLINDER BASED MOTION PLATFORM**
- **REALISTIC BIKE & CONTROL SYSTEM**
- **10 EXOTIC ENVIRONMENTS**
- **5 CHARACTERS & 5 VEHICLES**
- **3 DIFFERENT GAME MODES**
- **COLOUR CHANGING LED CABINET LIGHTING**
- **BIKE UPGRADE SYSTEM ENCOURAGES REPEAT PLAY**

**DIMENSIONS (Per Cabinet):**

D 2350mm | W 1180mm | H 2580mm  
D 92" | W 46" | H 101"

2.8 M<sup>2</sup>  
30.0 SQ.FT

SCREEN  
SIZE  
47"

DAYTONA® IS A REGISTERED TRADEMARK OF THE INTERNATIONAL SPEEDWAY, INC. AND LICENSED TO INTERNATIONAL SPEEDWAY CORPORATION.



**DAYTONA**<sup>®</sup>  
**CHAMPIONSHIP USA**



# DAYTONA® CHAMPIONSHIP USA



1-8 PLAYERS



VIDEO GAME



RACING



LANGUAGES

THE TRUE LEGEND IS BACK! DAYTONA® USA is the holy grail of arcade racing - First launched in 1994, this brand new entry brings Sega's #1 racer screeching into the 21st century! Now available in this great new cabinet - designed to fit in more locations!

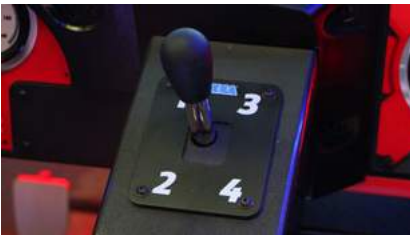
**WATCH**



SCAN QR CODE TO VIEW PRODUCT VIDEO

- **HORNET CAR THEMED MARQUEE**
- **COLORFUL LED EDGE LIGHTING**
- **4-WAY GEAR SHIFTER**
- **TAKE ON UP TO 8 PLAYERS**
- **3 BRAND NEW TRACKS**
- **3 CLASSIC TRACKS HD REMASTERED**
- **INSTANT REMATCH FEATURE**
- **ALL NEW TOURNAMENT MODE**
- **42" HD SCREEN**

**ALSO AVAILABLE IN NEW SDLX MOTION CABINET!**



**DIMENSIONS (Per Cabinet):**  
 D 1680mm | W 1080mm | H 2240mm  
 D 66" | W 42" | H 88"

**1.8 M<sup>2</sup>**  
**19.3 SQ.FT.**

**SCREEN SIZE**  
**42"**



## TARGET BRAVO: OPERATION GHOST



1-2 PLAYERS



VIDEO GAME



ACTION



LANGUAGES

Target Bravo: Operation Ghost puts players in the shoes of highly trained special force agents. They must use precision shooting and quick reactions to complete the mission while using some of the brand new tools at their disposal in this brand new edition of the evergreen SEGA franchise!

- **START AT ANY STAGE**
- **DOMINATE THE LEADERBOARDS IN A BRAND NEW TIME ATTACK MODE**
- **ALSO AVAILABLE AS AN UPRIGHT CABINET**

WATCH



SCAN QR CODE TO VIEW PRODUCT VIDEO

### DIMENSIONS:

D 1828mm | W 1574mm | H 2463mm  
D 72" | W 62" | H 97"

2.9 M<sup>2</sup>  
31.2 SQ.FT

SCREEN SIZE  
55"

SOUTH AMERICA ONLY

## VIRTUAL RABBIDS: THE BIG RIDE



1-2 PLAYERS



VR



SIMULATOR

Say hello to the industry's first attendant-free VR attraction. Virtual Rabbids: The Big Ride was created in partnership with Ubisoft, featuring the wild and wacky Rabbids. Players can choose from three unique experiences, full of twists, turns, thrills and spills, for an all-ages VR attraction that lives up to the hype!

- **ATTENDANT FREE VR ATTRACTION**
- **INDEPENDENT WIND JETS & CUSTOM SEATS WITH HI-FI AUDIO**
- **OPTIONAL 3 NEW FILMS UPGRADE**



RABBIDS © UBISOFT ENTERTAINMENT. ALL RIGHTS RESERVED. RABBIDS & THE VIRTUAL RABBIDS: THE BIG RIDE LOGO ARE TRADEMARKS OF UBISOFT ENTERTAINMENT IN THE U.S. AND/OR OTHER COUNTRIES.

WATCH



SCAN QR CODE TO VIEW PRODUCT VIDEO

### DIMENSIONS:

D 3400mm | W 1400mm | H 2940mm  
D 119.3" | W 65" | H 114.4"

4.7 M<sup>2</sup>  
50.5 SQ.FT

SCREEN SIZE  
55"

## STORM RACER MOTION DLX



1-8 PLAYERS



VIDEO GAME



RACING

Storm Racer Motion takes arcade racing to a new level with a super fast driving experience like no other! Storm Racer Motion will have players coming back again and again to master the 12 cars and 14 tracks available in the game!

- **12 CARS, 14 TRACKS**
- **UNIQUE THROTTLE FOR BOOST**
- **MOTION BASE**
- **ALSO AVAILABLE AS A STANDARD CABINET**



### DIMENSIONS:

D 2230mm | W 1210mm | H 2240mm  
D 40" | W 33" | H 87"

2.6 M<sup>2</sup>  
27.8 SQ.FT

SCREEN SIZE  
42"

## LET'S GO ISLAND: DREAM EDITION



2 PLAYERS



VIDEO GAME



ACTION



LANGUAGES

The follow-up to the number one SEGA action adventure 'Let's Go Jungle' is back and re-imagined in this all-new Dream Edition motion cabinet. Once again players are on a South Pacific island diving tour and soon end up in trouble with dastardly and despicable pirates.

- **RAPID FIRE, FIXED PIVOT GUN**
- **MULTIPLE ROUTES & STAGES**
- **FAMILY FUN DREAM MOTION SYSTEM**



### DIMENSIONS:

D 2050mm | W 1590mm | H 2200mm  
D 81" | W 63" | H 87"

3.2 M<sup>2</sup>  
34.4 SQ.FT

SCREEN SIZE  
55"

# ROLLING INTO ARCADES!

**#1 for 10 weeks, 5 weeks ROI!**

**Single Unit - Midwest FEC**

**\$4000+ in one week!**

**Single Unit - North American FEC**



"Power Roll is one of the best games out today and it's among the Top 10 Ranked games. This is simply amazing for a new game to accomplish these consistent high earnings. Sega has a winner!!!"

**Frank Seninsky, President/CEO**

**Alpha-Omega Amusements & Sales**

"Power Roll is a fantastic & consistent earner. It's among the top pieces we operate and seems to work in all environments."

**George Smith, President of**

**Family Entertainment Group.**



# POWER ROLL



1 PLAYER



SKILL GAME



REDEMPTION

Presented in a jaw-dropping cabinet, Power Roll will stand out in any location! Fun, intuitive gameplay sees players use the lever with optimum strength, to launch the ball up the playfield and into the bonus ticket zone. As the ball rolls up the playfield it swings the stoppers creating an irresistible mechanical attraction that mesmerizes players. Various ticket values along the ramp ensure players always wins tickets.

**WATCH**



SCAN QR CODE TO VIEW PRODUCT VIDEO



- **100% SKILL GAME**
- **SIMPLE PULL & RELEASE GAMEPLAY**
- **EYE-CATCHING CABINET DESIGN WITH ATTRACTIVE LIGHTING**
- **IRRESISTABLE ATTRACTION FOR PLAYERS OF ALL AGES**
- **BRIGHTLY LIT CONTROLLER & PLAYFIELD**

<b>DIMENSIONS (Per Cabinet):</b> D 2169mm   W 833mm   H 2589mm D 85"   W 32"   H 102"	<b>1.8</b> M <sup>2</sup> <b>19.4</b> SQ.FT
---	--

# PIXEL CHASE



## PIXEL CHASE



1-2 PLAYERS



SKILL GAME



REDEMPTION

Pixel Chase is a brand new skill based redemption game in a brightly LED lit cabinet. Players demonstrate their pitching skills by throwing as many balls into the 4x4 LED lit target holes within the time limit. Target holes light up red, green or blue, which correspond to different scores. If the player exceeds the 'high score', they win the bonus tickets. The wide cabinet allows multiple players to throw the balls simultaneously. Pixel Chase is perfect for all game centres and FEC.

WATCH



SCAN QR  
CODE TO  
VIEW PRODUCT  
VIDEO



- **QUICK BALL RETURN**
- **SINGLE OR TWO PLAYERS CAN PLAY SIDE BY SIDE**
- **OPTIONAL MEGA BONUS MARQUEE AVAILABLE**

### DIMENSIONS:

#### Single Game

D 2471mm | W 1053mm | H 2681mm  
D 97" | W 41" | H 105"

**2.5** M<sup>2</sup>  
**26.9** SQ.FT

#### Double Game

D 2471mm | W 2114mm | H 2681mm  
D 97" | W 83" | H 105"

**5.2** M<sup>2</sup>  
**55.9** SQ.FT



# BALL RUNNER



## BALL RUNNER



1-2 PLAYERS



SKILL GAME



REDEMPTION

Ball Runner is a fantastic new redemption game from SEGA aimed at the whole family. Combining mechanical and digital features the game creates a unique fun player experience. The player slides balls along runners up the playfield to hit lit targets and score points. The more points you score, the more tickets you win.

**WATCH**



SCAN QR  
CODE TO  
VIEW PRODUCT  
VIDEO



- **BRIGHT COLORFUL LIGHTING MATRIX**
- **SIMPLE INTERACTIVE GAME PLAY**
- **LOW AND WIDE PLAYFIELD DESIGNED TO ENCOURAGE FAMILY FUN**
- **COMPACT CABINET THAT IS IDEAL FOR ANY LOCATION**

### DIMENSIONS:

D 1826mm | W 1006mm | H 2530mm  
D 71" | W 39" | H 99"

1.8 M<sup>2</sup>

19.3 SQ.FT



# MAZE ESCAPE



1 PLAYER



SKILL GAME



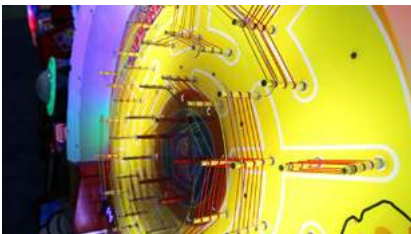
REDEMPTION

Maze Escape is the brand new, hit redemption game from SEGA! Guide the ball through the maze by turning the super-sized wheel, and land it in one of the seven prize zones to escape with your ticket win! The game could not be easier to play, and those that play again and again will soon learn to balance, juggle and manoeuvre the ball through the maze! But only true maze masters will have the skill to land the ball in the bonus zone and come away with the big ticket win!

**WATCH**



SCAN QR  
CODE TO  
VIEW PRODUCT  
VIDEO



- **ILLUMINATED SUPER-SIZED WHEEL CONTROLLER**
- **QUICK, EASY TO UNDERSTAND GAMEPLAY**
- **FUN, COLORFUL THEMING TO ATTRACT PLAYERS**
- **STANDOUT TOP TO BOTTOM LIGHTING**

#### DIMENSIONS:

D 840mm | W 1035mm | H 1814mm  
D 33" | W 41" | H 72"

0.8 M<sup>2</sup>

8.6 SQ.FT



# HOOPLA



The brand new redemption game based on the all-time classic carnival game. With intuitive and fun gameplay, Hoopla is a must play game and will become a classic for generations to come! Players must simply get hoops on the seven pegs to win tickets.

- **REACTIVE LED LIGHTING**
- **LINKABLE FOR UP TO 15 PLAYERS**
- **LIT BACK BOARD & MOVING HOOP**

<b>DIMENSIONS:</b>	
<i>Single Game</i>	
D 2400mm   W 1138mm   H 2390mm	2.7 M <sup>2</sup>
D 94"   W 44"   H 110"	29.1 SQ.FT
<i>Double Game with Marquee</i>	
D 2400mm   W 2300"   H 3540mm	8.2 M <sup>2</sup>
D 94"   W 90"   H 139"	88.8 SQ.FT

# SONIC BLAST BALL



Sonic Blast Ball is a fast-paced redemption game featuring one of video games most famous characters! Players must activate the gates at the top to drop the rotating ball into the play area. Skillful players aim to drop the ball through Sonic's bonus zone and get a spin on the bonus wheel to win up to 1000 tickets!

- **INSTANTLY RECOGNIZABLE SONIC BRANDING**
- **UNIQUE BLAST BALL LED-LIT ATTRACT MODE**
- **SMALL FOOTPRINT**

<b>DIMENSIONS:</b>	
D 895mm   W 1040mm   H 2625mm	0.9 M <sup>2</sup>
D 35"   W 41"   H 83"	10 SQ.FT



## SONIC SPORTS BASKETBALL



1-15 PLAYERS



SPORTS GAME



REDEMPTION

Sega's tremendously popular Sonic Basketball now comes with brand new reactive lighting effects that makes scoring even more gratifying. Fresh colorful Sonic The Hedgehog™ branding from top to bottom and blue lighting attracts all the players.

- **REACTIVE LED LIGHTING**
- **LINKABLE FOR UP TO 15 PLAYERS**
- **LIT BACK BOARD & MOVING HOOP**
- **TICKET DISPENSER BUILT IN**

**WATCH**



SCAN QR  
CODE TO  
VIEW PRODUCT  
VIDEO

### DIMENSIONS:

D 2490mm | W 1040mm | H 2640mm  
D 98" | W 41" | H 104"

2.6	M <sup>2</sup>
28.0	SQ.FT



## SONIC SPORTS KIDS BASKETBALL



2 PLAYERS



SPORTS GAME



REDEMPTION

SEGA brings the fun energetic and charming character Sonic to kids basketball. Thanks to the smash hit global success of Sonic standard size basketball; operators can now also boost their income with this new game!

- **LOWERED AND WIDE PLAYER FIELD FOR KIDS**
- **TWO HOOPS AT DIFFERENT HEIGHTS TO APPEAL TO DIFFERENT PLAYER HEIGHTS AND AGES**
- **OPTIONAL TICKET DISPENSERS**

**WATCH**



SCAN QR  
CODE TO  
VIEW PRODUCT  
VIDEO

### DIMENSIONS:

D 1410mm | W 1400mm | H 1820mm  
D 55" | W 55" | H 71"

1.9	M <sup>2</sup>
20.4	SQ.FT

# SONIC SPORTS AIR HOCKEY



2-4 PLAYERS



SPORTS GAME



REDEMPTION

Sega have brought together Sonic, redemption and a fast paced air hockey table to create a "must have" table for any location.

- **BRAND NEW PLAYFIELD LIGHTING**
- **CHASING LED LIGHTS & LIGHTING GANTRY**
- **SCRATCH RESISTANT PLAY FIELD**
- **OPTIONAL DUAL TICKET DISPENSERS**
- **2 OR 4 PLAYERS**



## DIMENSIONS:

D 2290mm | W 1680mm | H 2160mm  
D 90" | W 66" | H 85"

3.8 M<sup>2</sup>  
40.9 SQ.FT

# HOT RACERS



1-2 PLAYERS



VIDEO GAME



RACING



REDEMPTION

Hot Racers is a fun police chase game just for kids! Choose from either the motorcycle or the police car and chase the baddies in this colorful, action-packed ticket redemption game. The game draws players in with its LED-lit seating and unique car shaped cabinet, which comes to life in the attract mode and grabs players attention!

- **CAR OR MOTORBIKE, KIDS GET TO CHOOSE THEIR FAVORITE VEHICLE**
- **TICKET REDEMPTION OR CAPSULE VEND OPTIONS**
- **USA AND COUNTRY SPECIFIC FLAG VERSIONS**



## DIMENSIONS:

D 3400mm | W 1400mm | H 2940mm  
D 119.3" | W 65" | H 114.4"

4.7 M<sup>2</sup>  
50.5 SQ.FT

SCREEN  
SIZE  
55"



**SHOOT IT**  
**WIN IT**

# SHOOT IT WIN IT



## SHOOT IT WIN IT



1-2 PLAYERS



SKILL GAME



PRIZE

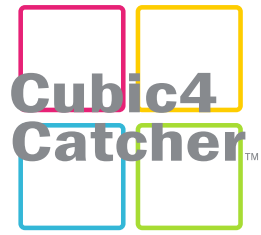
Shoot It Win It is a new and innovative prize redemption game from Sega. Player use the fun gun controller to shoot cork pellets at six targets located below each prize zone. Shoot down all six targets to redeem the corresponding prize. This game combines the fun of a shooting gallery with a high value merchandiser.

- **SIMPLE INTUITIVE GAMEPLAY**
- **FUN PRIZE SHOOTING GALLERY EXPERIENCE**
- **8 LARGE PRIZE POSITIONS**
- **QUICK AND EASY REFILLING**
- **MOTION AND SHELF CHEAT SENSORS**
- **DIGITAL BOOKKEEPING**
- **BRIGHTLY LIT SECURE CABINET**
- **100% SKILL**



**DIMENSIONS (Per Cabinet):**  
D 2216mm | W 1689mm | H 2388mm  
D 87" | W 66" | H 94"

**3.7** M<sup>2</sup>  
**39.8** sq.ft



## CUBIC 4 CATCHER



1-4 PLAYERS



CRANE

Cubic 4 Catcher is a brand-new kids prize crane from SEGA. Peek from above and try to catch the prizes! At just 3.2ft (1m) high this game features a transparent cellophane giving kids a unique perspective that will intrigue and fascinate them as they try to collect prizes. Simple to control - the child has free control over the claw within the time limit. Other players are quickly attracted to join the fun on this four player cabinet. The see-through cabinet design, attractive lighting and a play position on every side makes this a ideal centerpiece in any kids zone.

- **4 PLAYER CRANE FOR KIDS**
- **FRESH AND BRIGHT CABINET DESIGN**
- **SIMPLE TO OPERATE**
- **IDEAL FOR CUTE SMALL PRIZES**
- **SMALL FOOTPRINT**



**DIMENSIONS:**  
D 1217mm | W 1217mm | H 983mm  
D 48" | W 48" | H 39"

**1.4** M<sup>2</sup>  
**15.0** SQ.FT





# CAPTO CRANE



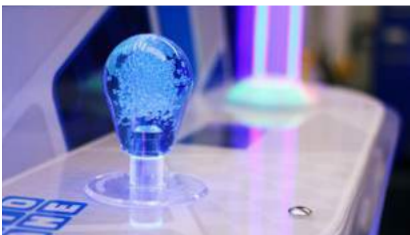
1 PLAYER



CRANE

Capto Crane is a contemporary new single player crane. The bright LED edge lighting gives the game a unique and attractive look that draws player attention at any location. Featuring two prize holders, with a mirrored back, maximises prize visibility. Reliable mechanical parts, adjustable controls, easy to re-stock and operate - Capto Crane is a perfect edition to any FEC or arcade.

- **MODERN LOOK PRIZE CRANE**
- **COMPACT SINGLE PLAYER CABINET**
- **MIRRORED BACK FOR EXTRA PRIZE VISIBILITY**
- **EASY TO RE-STOCK AND SET UP**



**DIMENSIONS (Per Cabinet):**  
D 835mm | W 815mm | H 2090mm  
D 33" | W 32" | H 82"

**0.6** M<sup>2</sup>  
**6.4** sq.ft



## KEY 2 WIN



1 PLAYER



PRIZE

The wait for a great prize merchandiser game is finally over - SEGA's Key 2 Win is here! This game once again raises the bar in this game category. Bright individually lit prize holders gives a fresh new look and makes prizes more eye catching. New unique translucent header stands out from other prize vending games on location. Key 2 Win is set to be the best prize merchandiser game for years to come.

**WATCH**

SCAN TO VIEW VIDEO



- **SIMPLE INTUITIVE GAMEPLAY**
- **EYE CATCHING INDIVIDUALLY LIT PRIZE HOLDERS**
- **UP TO 15 PRIZE POSITIONS**
- **SECURE AND DURABLE CABINET BUILD**
- **QUICK AND EASY REFILLING**
- **LARGE PRIZE OUT DISPENSER**

**DIMENSIONS:**  
 D 816mm | W 985mm | H 2220mm  
 D 32" | W 39" | H 87"

**0.7 M<sup>2</sup>**  
**7.5 SQ.FT**



## PRIZE ARROW



1 PLAYER



PRIZE

Prize Arrow will test a player's accuracy in this brand new arcade prize merchandiser! Players will get the game straight away, all they have to do is aim the arrow and shoot for the prize they wish to win! It couldn't be simpler! Magic Arrow is not only perfect for any existing arcade location but also bars, shopping malls and service stations.

WATCH



SCAN  
TO VIEW  
VIDEO



- **"ONE MORE TIME" GAMEPLAY**
- **100% SKILL**
- **SIMPLE TO PLAY**
- **QUICK, EASY REFILLING BRIGHTLY LIT CABINET**
- **8 PRIZE SHELVES**
- **PRIZE EVERY TIME KIT OPTION**

#### DIMENSIONS:

D 840mm | W 1034mm | H 2216mm  
D 33" | W 40" | H 87"

0.8 M<sup>2</sup>

8.6 SQ.FT

# USED GAMES

Through our global network, SEGA Amusements International has developed a supply chain of previously owned games. We have assembled a highly skilled and very experienced team of technicians, solely dedicated to achieving the highest standards in refurbishing machines allowing us to offer a wide range of video games, simulators, redemption and novelty machines to any market throughout the world. We understand that it is a false economy to supply our customer with anything other than the very best quality possible and this division prides itself on the work it produces.

All machines, once refurbished, are given our official seal of approval. The 'SEGA Assured' stamp proves that the machine has been through extensive testing and has passed our rigorous and strict assessment procedures.

A full list of games available can be found at [www.segaarcade.com](http://www.segaarcade.com). We also distribute a full list by e-mail on a regular basis. To have your email address added to our database, please send a request to [sales@segaarcade.com](mailto:sales@segaarcade.com)



# SEGA PRIZE

Sega Prize International, specialises in providing family entertainment centres and amusement locations with colourful creative and premium quality licensed plush and merchandise. This is a dynamic team of innovators, dedicated to developing beautiful products that create cherished life long memories for consumers around the globe.

Our prize program is constantly growing, including popular licences that are highly desirable to the players of today. Creativity is our strength and we are always exploring new ideas that excite all ages and genders. We believe in value for money and offering great quality products at the best possible prices.



**TREVOR CLARKE**  
HEAD OF MERCHANDISE

@ trevor.clarke@sega.co.uk  
+44 (0)208 391 8086  
+44 (0)7968 209650

**GENERAL ENQUIRIES**  
sega.prize@sega.co.uk  
**+44 (0) 208 391 8089**









**SEGA**<sup>®</sup>  
amusements international

📧 [sales@segaarcade.com](mailto:sales@segaarcade.com)  
☎️ +1 847-364-9787  
🌐 [www.segaarcade.com](http://www.segaarcade.com)

42 BARWELL BUSINESS PARK  
LEATHERHEAD ROAD  
CHESSINGTON | SURREY | UK  
KT9 2NY

**FOLLOW**  
@SEGAAMUSEMENTS

